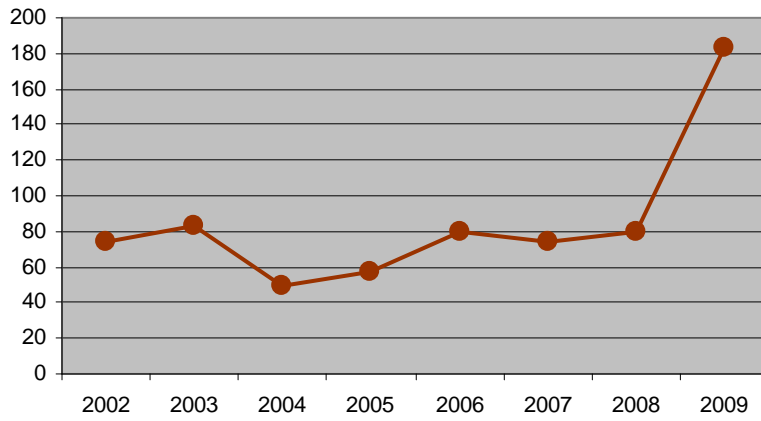
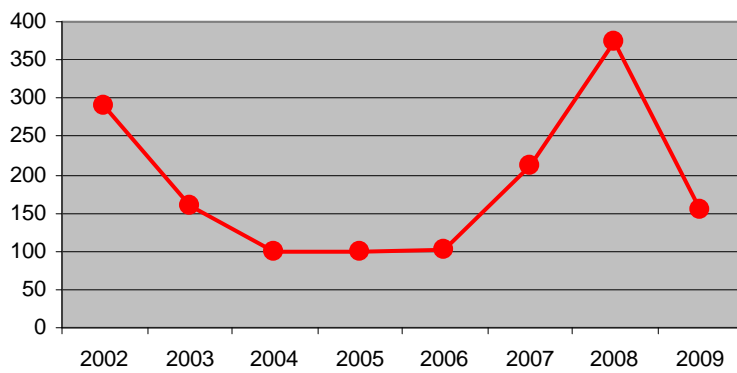


BILAN DE 2002 A 2009

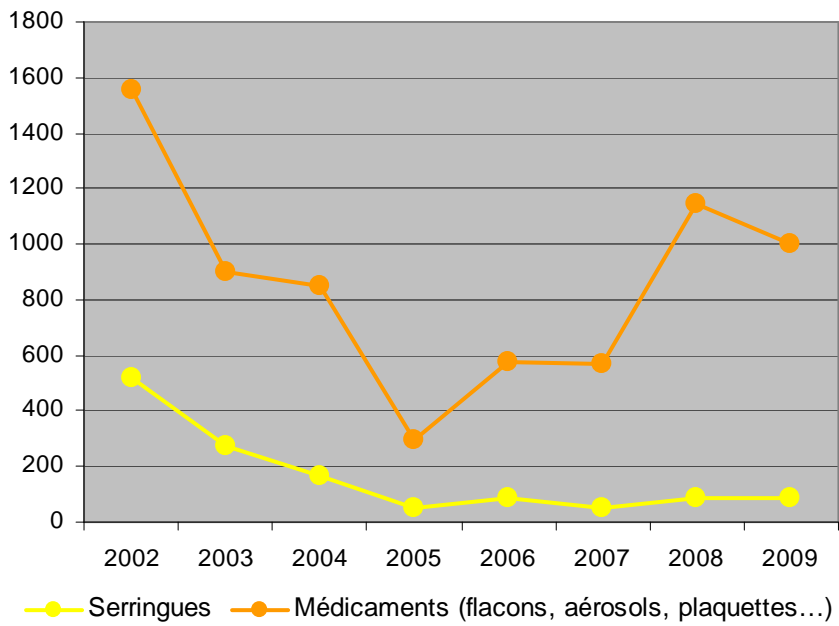
Bois total évacué : 681 tonnes



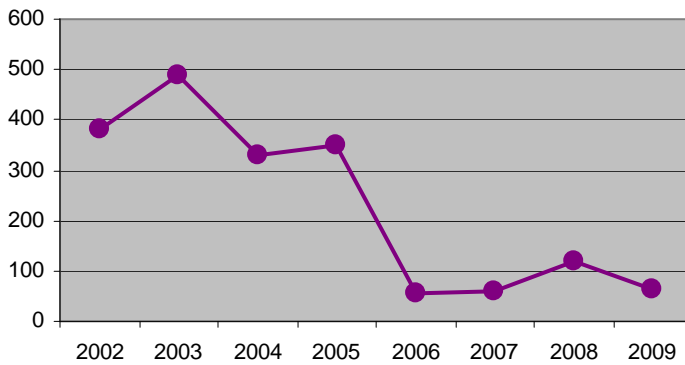
Cadavres d'animaux : 1495 kg



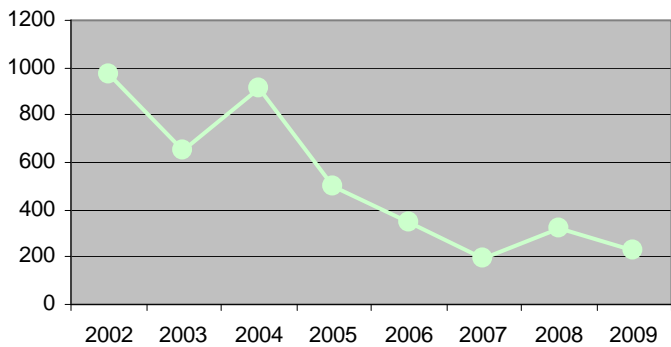
Déchets Activités Soins à Risque Infectieux :
Médicaments 5590 unités
Seringues : 1308 unités



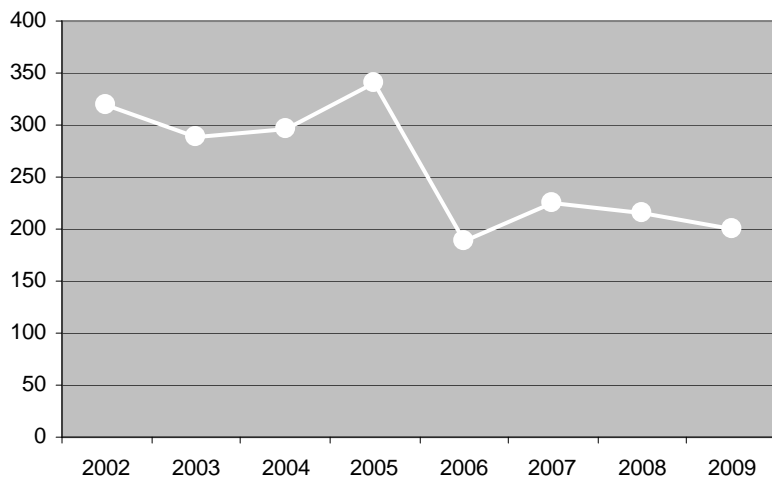
Déchets toxiques : 1848 kg



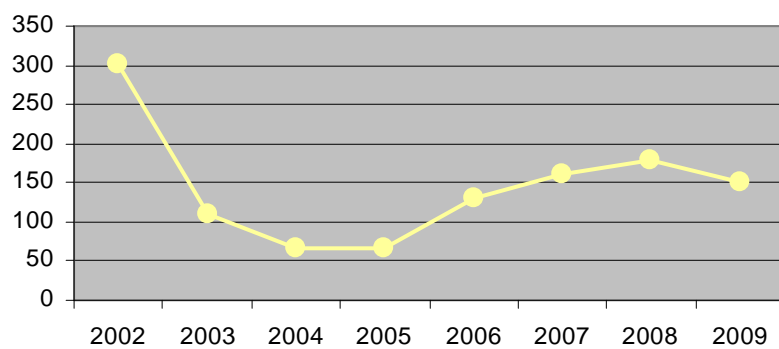
Aérosols : 4126 unités



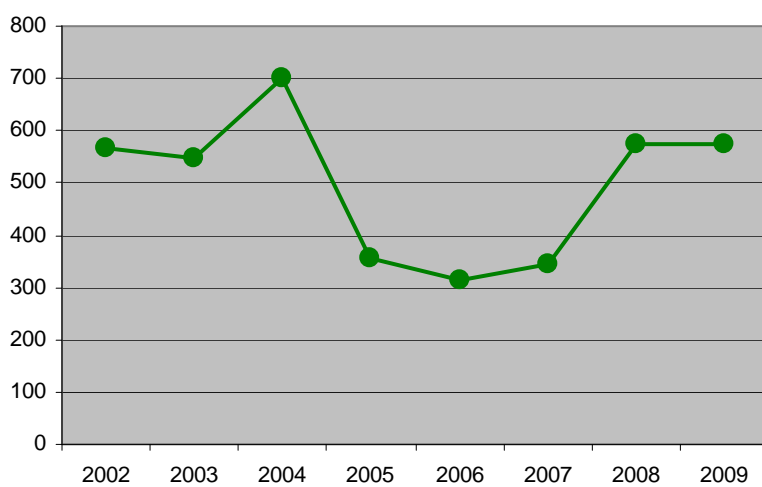
PSE : 2071 kg



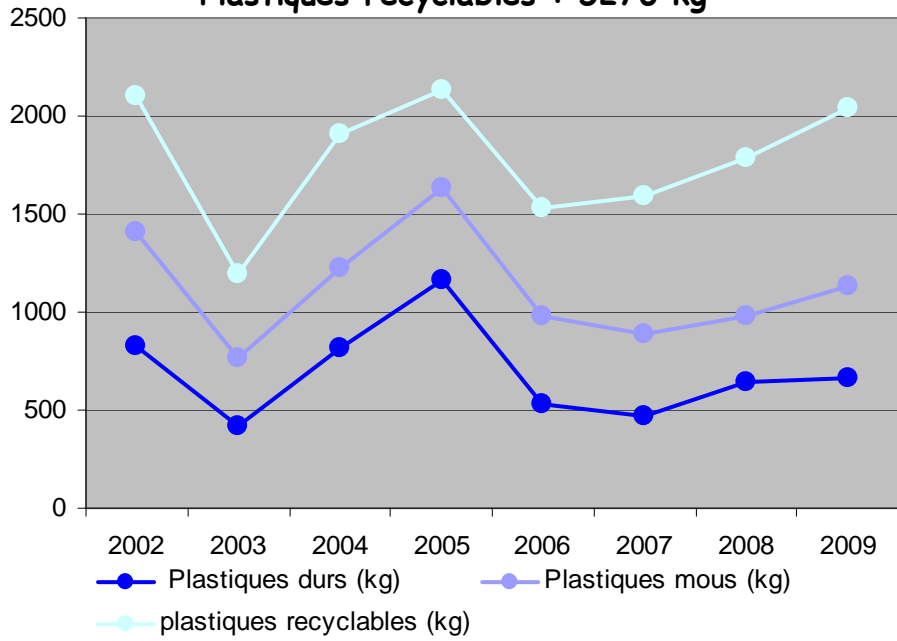
Cordages : 1164 kg



Verre : 3972 kg



Plastiques durs : 5521 kg
Plastiques mous : 3497 kg
Plastiques recyclables : 5276 kg



Métaux : 775 kg

